



PROGRESS SINCE OFSTED

This is a special edition of our newsletter focused on letting you know about the amazing progress Nields has made since the Ofsted inspection and joining Great Heights Trust. There is still a lot of work to do to ensure every child gets the best possible offer but you can see we are well on the way. We are immensely proud of our pupils and this progress would not be possible without the hard work of all the staff, support from our families and wider community and the support and significant financial investment from our Great Heights Trust of which we are immensely proud to be part of.

EARLY YEARS PROVISION

Ofsted noted that we had begun to address the provision for children in the early years and staff supported all children well. They commented that the curriculum in EYFS was in the early stages of development, which meant children were not yet prepared for their learning in key stage 1 and beyond.

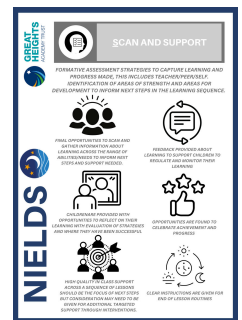
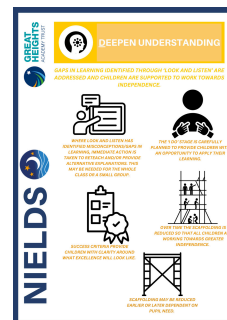
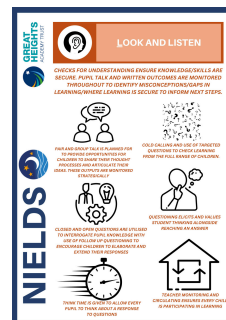
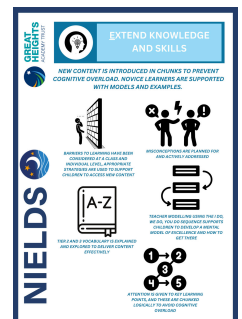
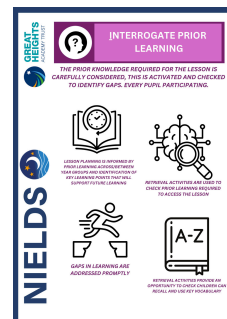
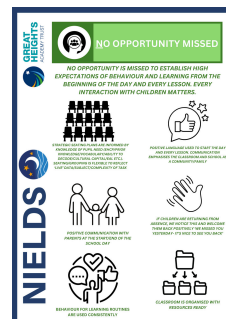
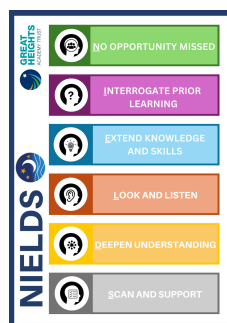
We have now greatly improved the outdoor provision with the addition of equipment that safely challenges all of our children and helps with their physical development. Our children love taking turns to see how high they can climb on our climbing wall, learning about road safety on our bike track and testing out their balancing skills on our rope bridges.



The indoor provision is now better matched to the needs of our children who are now making really good progress particularly with basic skills such as phonics, early reading, early writing and language development. The English Hub and the school improvement team have commented positively on the teaching and learning environment.

QUALITY OF EDUCATION

Ofsted commented that the curriculum was in the early stages of development and lessons did not develop pupils' knowledge, skills or understanding well enough. With the help and support of the Great Heights Research School, we have devised and adopted the NIELDS teaching model. This allows for consistency of teaching throughout our school and as a result of using this model our children will achieve better outcomes and be prepared for their next stage of learning.

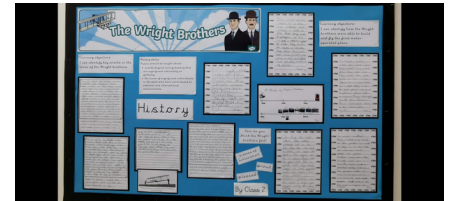
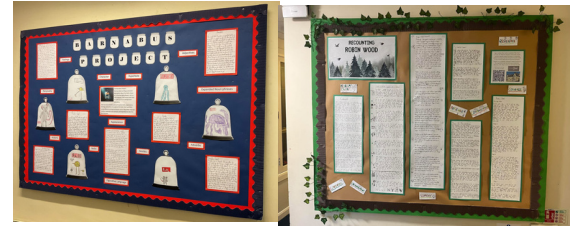


Ofsted recognised our work to improve reading within our school. This included implementing a carefully sequenced programme for the teaching of phonics with support from Great Heights English Hub. They acknowledged that this was beginning to inspire pupils in their own reading. They commented that some staff had not received the training needed to deliver this programme consistently well.

With continued support from the English Hub, we have strengthened our reading provision and staff have been trained to deliver the programme effectively. Staff meet regularly to provide any updates, support with the teaching and to ensure consistency. We have seen an improvement in our children's reading and are confident to see this reflected in the upcoming phonics screening in the Summer term.



As our quality of education continues to improve, our children and staff are keen to showcase their hard work to their parents and carers and other pupils through fantastic displays around school and class assemblies. These have been well attended and the positive feedback from parents and carers is appreciated. We are hopeful that all the hard work of our pupils and staff will be reflected in improved academic results at the end of the school year.



BEHAVIOUR AND ATTENDANCE

We are currently the best performing school within the Great Heights Academy Trust for attendance with over 96% attendance. This is 2% up on last year and well above the national average of 94%. This is an attendance statistic associated with at least 'good' schools. This means our children love coming to school and enjoy learning at Nields Academy. We appreciate your ongoing support and efforts to help achieve this attendance rate.

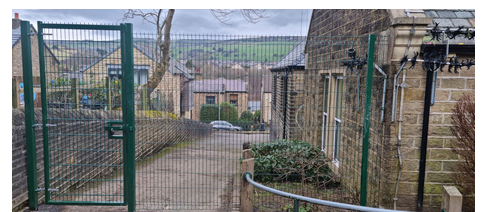
We have high expectations for behaviour and attendance within school and the vast majority of our pupils make the right decisions. We acknowledge and celebrate these right choices with our good to be green scheme and within our celebration assemblies.

SCHOOL IMPROVEMENTS

Due to a significant financial investment in our School by Great Heights Trust, we have been able to start improvements around our school and our grounds. These include:

- Early years outdoor provision
- Signage displaying our name and details
- Fencing around the school to keep our pupils and staff safe
- New website - www.nields.ghat.org.uk
- Decorating the whole school inside

We are very grateful to the Trust for their continued support and investment into our school.



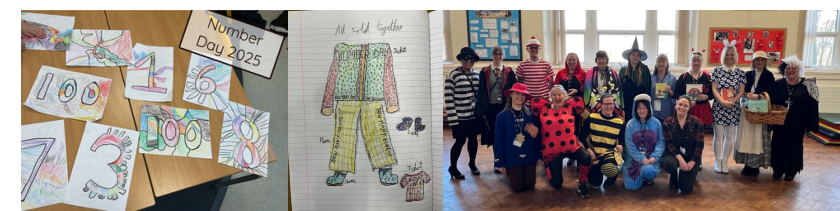
PERSONAL DEVELOPMENT

Ofsted commented that we should ensure we provide pupils with the regular learning opportunities to full embed and apply learning from the Personal, Social, Health and Economic (PSHE) education curriculum. Our Nields Garden underpins our personal development and Social, Emotional and Mental Health offer. We are very grateful to Mrs Hill for providing opportunities in the garden that enhance our curriculum and the children's learning. Visitors to our school always positively comment on our wonderful outdoor space.



Over this academic year the children and staff have also enjoyed numerous other opportunities that have allowed them to strengthen their PHSE learning and character development.

We have had visits from outside agencies and community groups such as the Police, Fire Service, National Trust, Colne Valley Male Voice Choir and Moon Raking Festival committee.



We have participated in charity events to raise awareness and money such as Macmillan Coffee Morning, World Book Day, NSPCC Number Day and Red Nose Day.

Our children have also enjoyed class trips visiting local places such as the Yorkshire Sculpture Farm and Burton Beef Farm, learning new skills on a residential in Cumbria or superbly representing the school at events including Young Voices and at an Eco-Conference.



BREAKFAST CLUB

Our Nields breakfast club started in January 2025 with thanks to the funding from Bond Brickwork. This club gives our children the best start to the school day and gives them the opportunity to build friendships and communication skills with children from different year groups. The breakfast club runs every Monday to Friday from 7.30am until 8.40am. It is open to years 1 - 6 and costs £3 or £4 per session depending on the start time. Places must be pre-booked and paid on Arbor. Please contact the school office if you require any further information.

